

A large, modern, multi-story hotel building with a grid-like facade of windows and balconies. The building is illuminated with a blue tint. The Radisson Blu logo is visible in the upper left and center of the image.

Radisson **BLU**

# Radisson Blu Hotel, Bruges

Open Since August 2018

# Why choose Radisson Blu Hotel, Bruges

- 1 Brand new 4-star Radisson Blu Hotel, in Bruges
- 2 Easy access and great location at the railway station (100m) and at walking distance from the historical center
- 3 6 meeting rooms (400m<sup>2</sup>) with an inspiring top floor - 12th offering meeting rooms with view over the city

# Location

Our proximity to the train station and large public parking means quick and easy access for all.

## TRAIN

Railway station Bruges is 100m away

## AIRPORT

Brussels Airport is 105km away (with direct train connection to Bruges)

## ROAD

The hotel is close to the junctions of the E40/E403/E34. It is also close to the motorways with direction to the Netherlands and France. Parking is available just in front of the hotel (€5,50/24h)

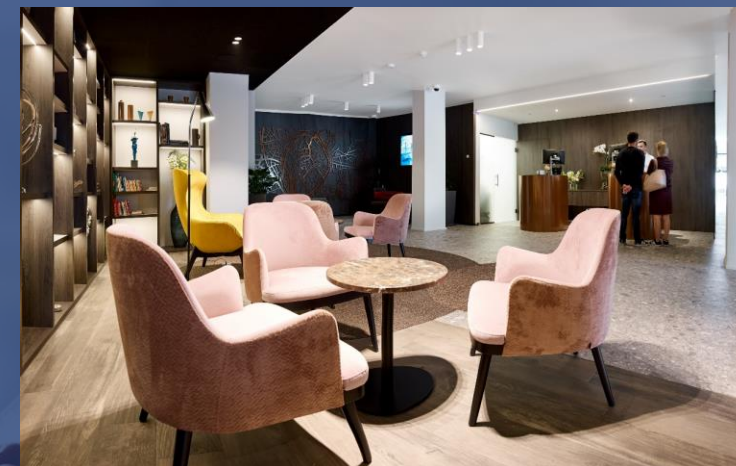


# Hotel Facilities

- 4\* hotel
- 109 guest rooms
- Standard-Superior-Family-Premium & Suites
- In house à la carte restaurant 'Black Swan'
- Cozy bar & lounge
- Hotel fitness (free usage)
- Public parking in front of the hotel (only € 3,50/24h)



# Reception & Lobby



# Bar – BlackSwan



# Restaurant – BlackSwan

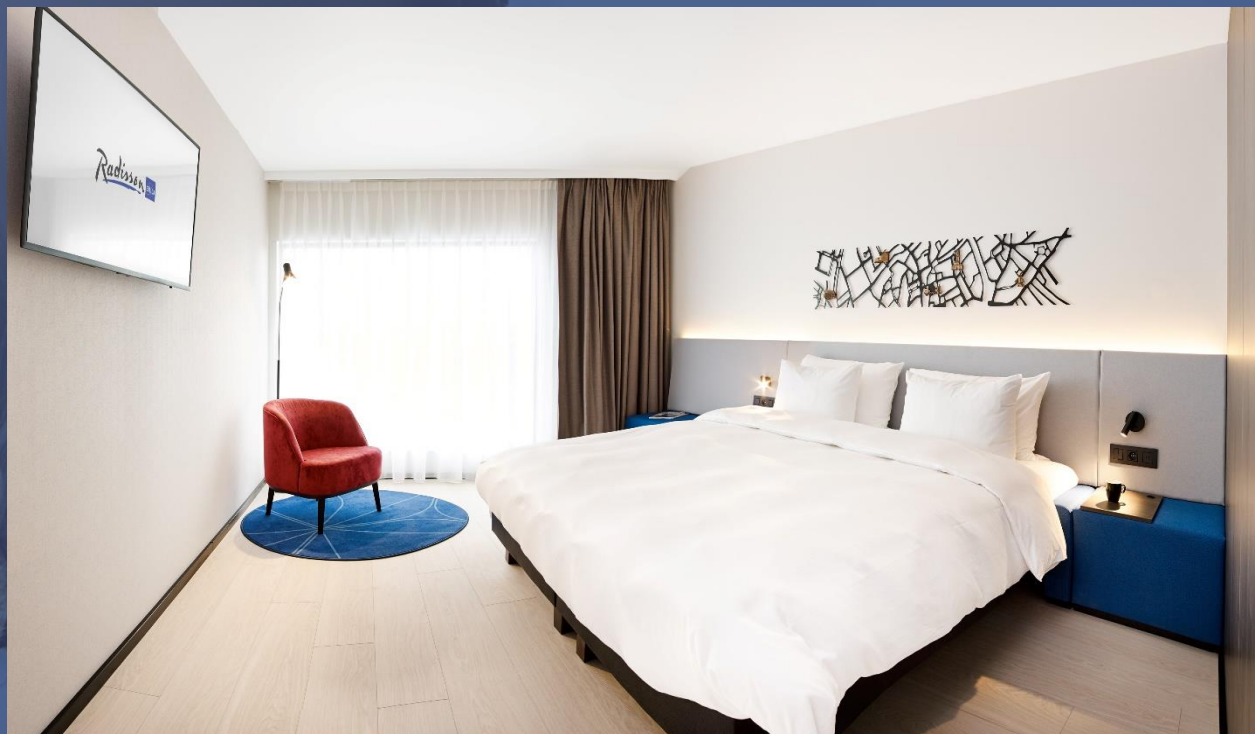


# Breakfast Area / Group Area

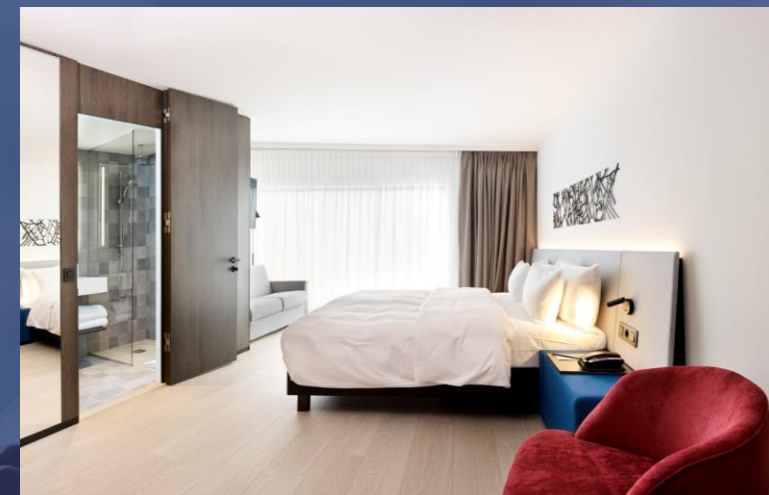
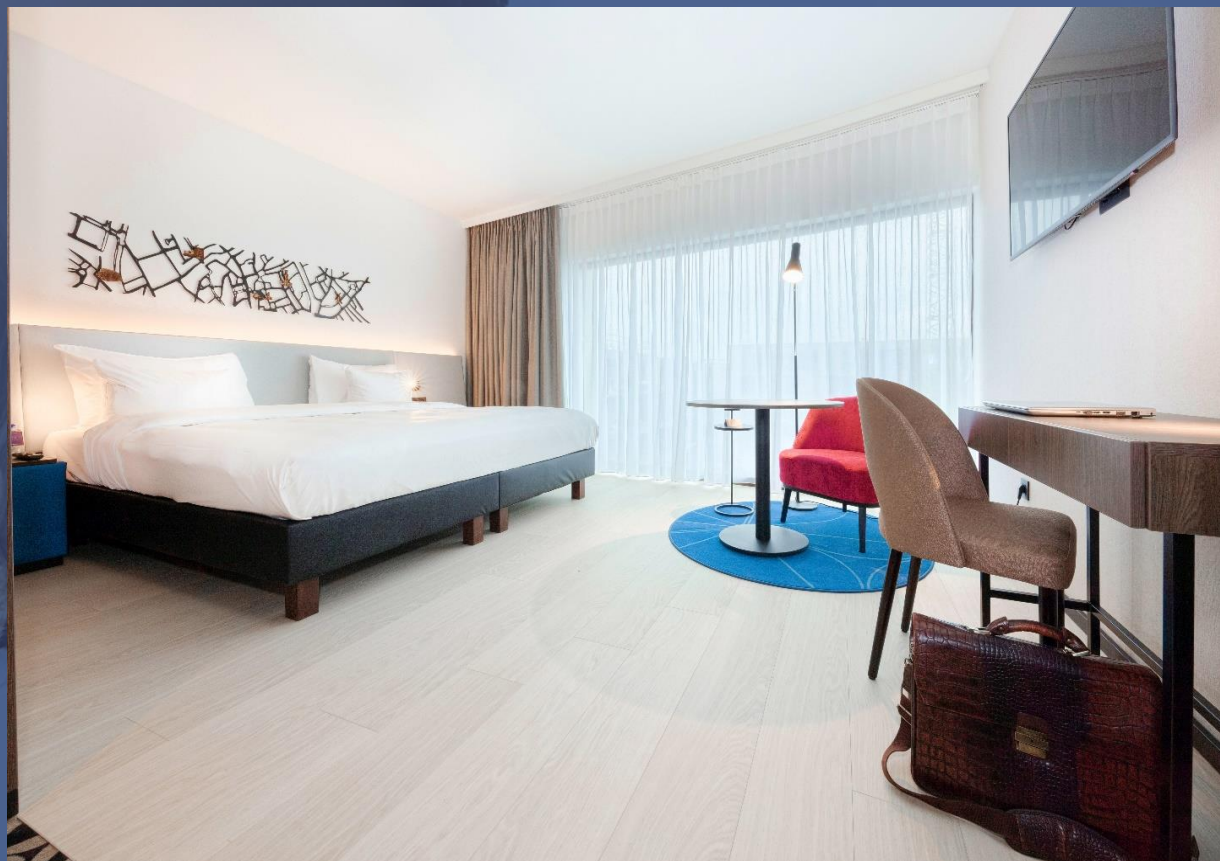




# Guest Rooms – Standard



# Guest Rooms – Superior/Family



# Guest Rooms – Premium



# Guest Rooms – Suite (11th floor)



# Meetings & Events Facilities

- 1 6 well equipped meeting rooms
- 2 400m<sup>2</sup> meeting space for up to 104 persons
- 3 Top floor (12th) with unique meeting rooms overlooking the city

# Meeting Rooms – Floor Plan

2<sup>nd</sup> floor



# Meeting Rooms

Board Room – Belfort – 2<sup>nd</sup> Floor



# Meeting Rooms

Board Room – Minnewater – 2<sup>nd</sup> Floor





# Meeting Rooms

Begijnhof – Oud Sint Jan – 2<sup>nd</sup> Floor



# Meeting Rooms

Beginnhof & Oud Sint Jan – Break-out Rooms



# Meeting Rooms – Floor Plan

12<sup>th</sup> Floor (Top Floor)



# Meeting Rooms

Concertgebouw – 12<sup>th</sup> floor



# Meeting Rooms

Concertgebouw – 12<sup>th</sup> Floor



# Meeting Rooms

Board Room De Burg – 12<sup>th</sup> Floor



# Meeting Rooms

Concertgebouw – Foyer 12<sup>th</sup> Floor



# Meeting Rooms – Capacity Sheet

Meeting Room	Opp .	Room Size	Theatre	Theatre/ Circle	Clas s	Board Room	U-Shape	Banqueting	Cabaret
<b>2ND FLOOR</b>									
Belfort (boardroom)	22	6,70 x 3,10	-	-	-	12	-	-	-
Oud Sint-Jan	38	6,50 x 5,90	32	28	24	20	14	24	18
Begijnhof	32	5,50 x 5,90	32	28	24	28	22	24	18
Begijnhof + Oud Sint-Jan	70	12,00 x 5,90	90	80	60	36	40	56	42
Minnewater (boardroom)	14	5,00 x 2,80	-	-	-	8	-	10	-
Foyer 2	19	5,80 x 3,20	-	-	-	-	-	-	-



# Meeting Rooms – Capacity Sheet

Meeting Room	Opp .	Room Size	Theatre	Theatre/ Circle	Class	Board Room	U-Shape	Banqueting	Cabaret
<b>12TH FLOOR</b>									
Concertgebouw	105	20,00 x 5,30	90	90	48	44	40	56	42
De Burg (boardroom)	25	6,20 x 4,00	-	-	-	12	-	-	-
Foyer 12	85	18,00 x 4,70	-	-	-	-	-	-	-
Privat hire 12th floor	215	24,20 x 8,70	-	-	-	-	-	-	-

# Fitness Room



# Contact

**Aster Baert**

Sales Executive

T.: +32 (0) 50 24 91 91

D.: +32 (0) 50 24 91 14

E.: [aster.baert@radissonblu.com](mailto:aster.baert@radissonblu.com)